

METIGLA 
smart covering. simply passion.



Metigla has an extensive Belgian experience in the production of **metallic cladding products**, since 1984, and has been present in Romania since 2000.

Mission

Our mission is to be proactive in addressing and anticipating customer needs, grow their confidence in our solutions, and offer them competitive and economic products.

It is very important for us to find the right solutions for each project, as we are seeking for long-term partnerships.



Values

We are proud of our company's evolution, where the team plays an essential role. This is why we have set together the values that motivate and animate us:

QUALITY

The satisfaction of our customers is based on the quality of our products and services.

DEVELOPMENT

We invest in innovation and expand our range, while developing team skills.

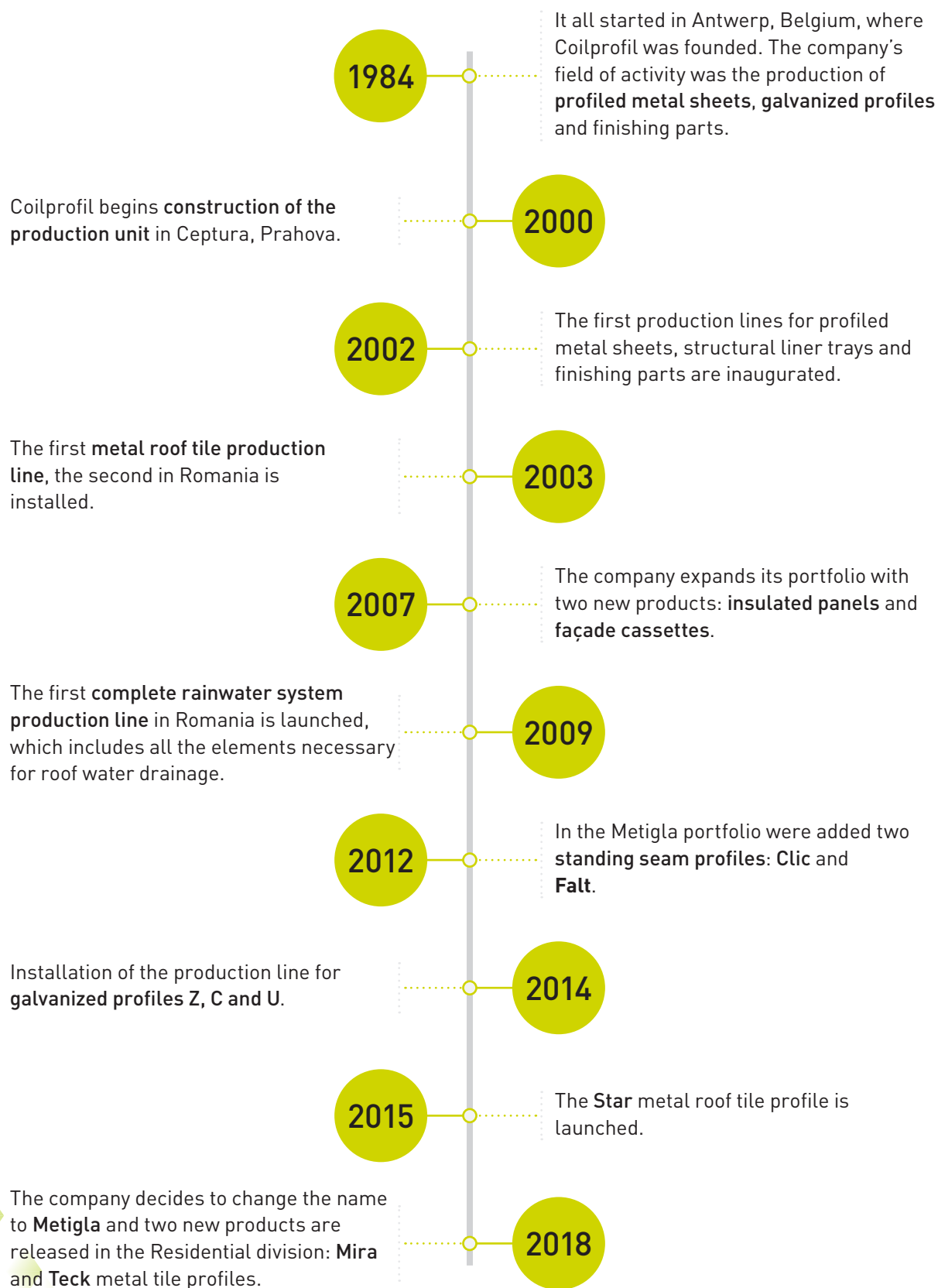
PARTNERSHIP

We strive to build long-term partnerships, based on transparency and mutual trust.



METIGLA
smart covering. simply passion.

History



Divizii





Industrial

This range of products is intended for a broad spectrum of constructions with industrial, agricultural, commercial, cultural or sports applications.

These products are used to build structures, to close roofs and walls, for interior partitions, extensions or metal finishes.



Profiled metal sheets

Metigla's technological lines allow the production of a wide range of profiled metal sheets, trapezoidal or corrugated, both for walls and roofs.

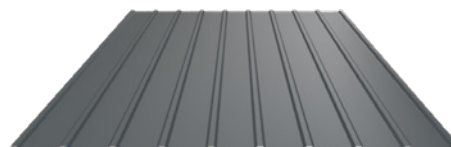
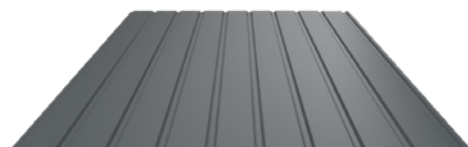
ZINC
275g/m²

Available profiled options:

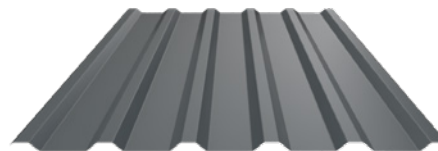
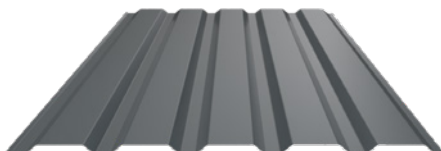
Wall profiles

Roof profiles

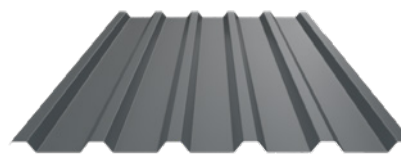
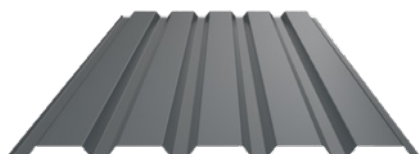
TR8



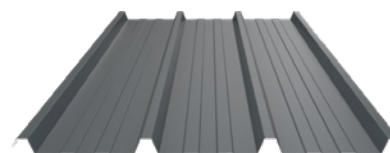
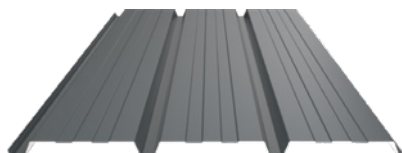
TR30



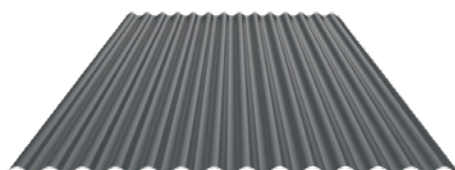
TR35



TR45



ONDU 18



ONDU 18 CURB



Wall / Roof profile

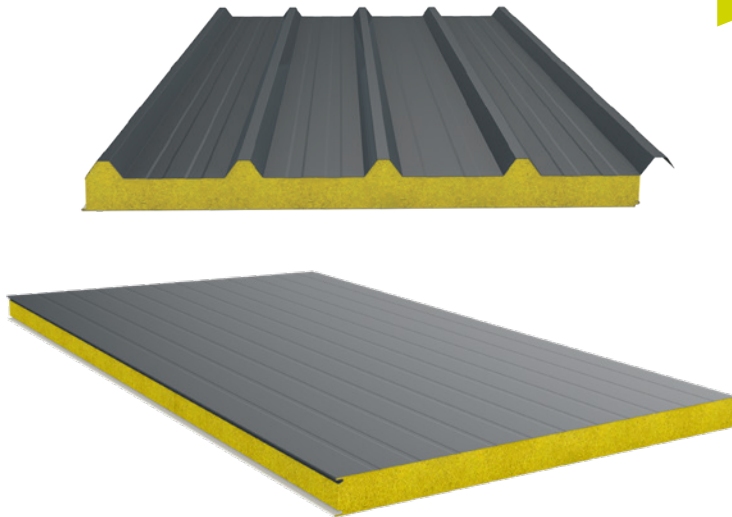
Wall / Roof profile

MW Insulated panels

Metigla thermo-insulated panels with mineral wool core (MW) are certified for fire resistance of up to 4 hours, preventing the spread of possible fires.

Benefits

Fire resistance
Sound insulation
Thermal insulation

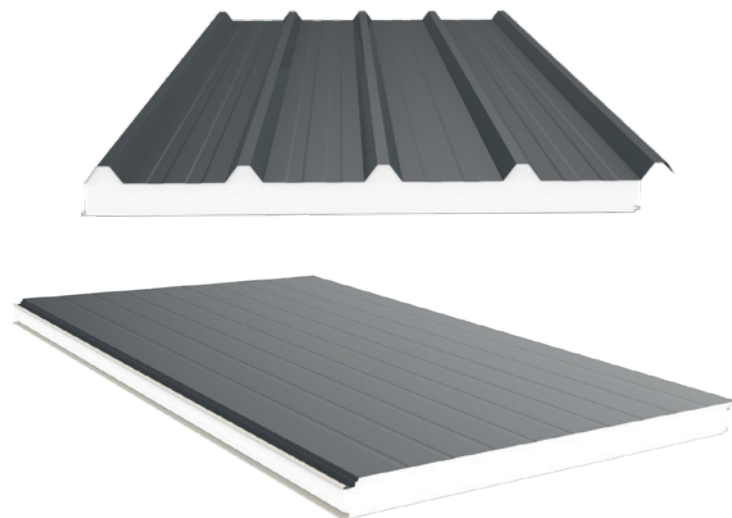


EPS Insulated panels

High-density polystyrene (EPS) insulated panels improve the energy efficiency of buildings by eliminating heat loss.

Benefits

Lightweight
Sound insulation
Thermal efficiency

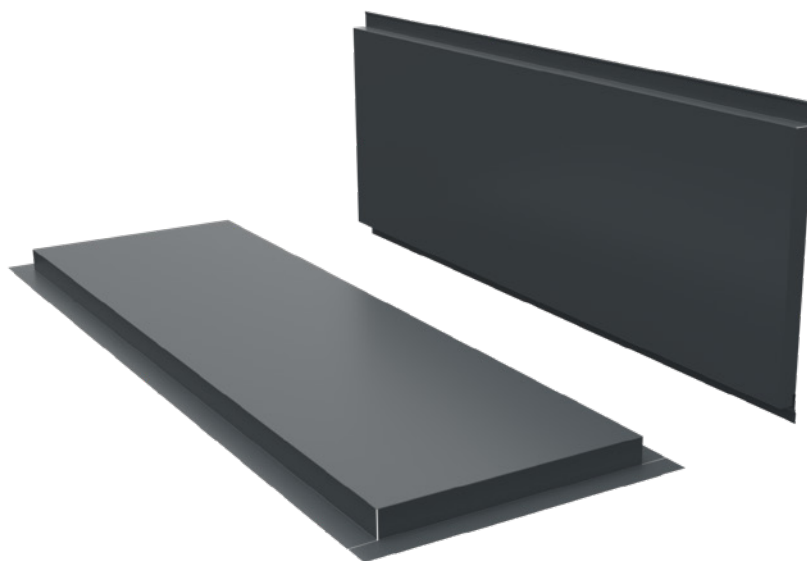




Façade cassettes

The modern finish and flexibility in design of Metigla's **façade cassettes**, offer an elegant touch, which lasts over time. Façade cassettes combine **functionality and aesthetics**, and are used to cover the exterior walls.

ZINC
275g/m²



Galvanized profiles

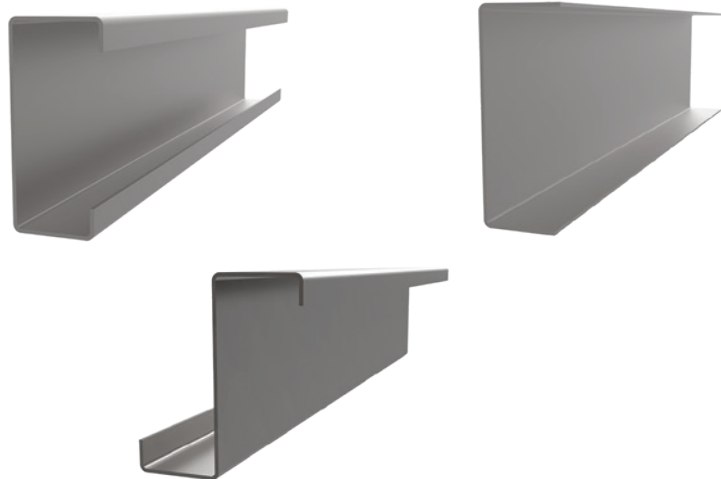
Galvanized profiles are used for **main or secondary structures**, beams and intermediate floors for all types of buildings: industrial or residential, commercial, agricultural, halls or warehouses.

ZINC
275g/m²

All galvanized profiles are **custom-made**, with the possibility of a **variety of perforations**.

Benefits

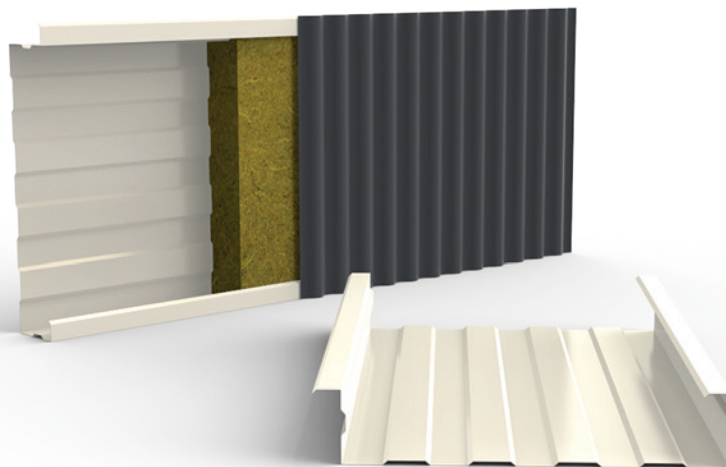
High load bearing capacity
Lightweight
Durability
Easy mounting



Structural liner trays

Structural liner trays are a functional solution for wall insulation. They are mounted horizontally, between the pillars of the resistance structure, and **replace the light beams** to support the external metal sheets.

Combined with a mineral wool core, the structural liner trays can be an ideal insulating solution for a wide variety of industrial, commercial or sports constructions.





Residential

Metigla manufactures **complete metal roofing systems** for modern, durable and aesthetic residential projects.

All profiles are designed with **contour cut**, making the joints almost invisible.

The metal roof sheets are cut according to the length needed for each project, for **easy installation** and **minimal loss of material**.



Metal roof profiles

ZINC
275g/m²

CLAS

The Clas profile is characterized by **elegant and harmonious lines**, that perfectly adapt to a multitude of architectural styles.



MIN.
SLOPE **8°**

STAR

Due to the **symmetrical appearance** of the profile, the joints between the sheet metal are virtually invisible and the assembly is quick and easy.



MIN.
SLOPE **14°**

MIRA

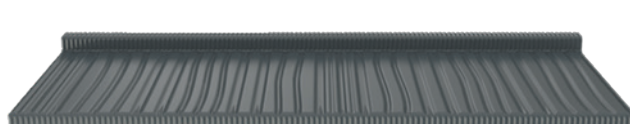
The Mira profile gives elegance and personality to the roof, making it a perfect choice for homes inspired by the Mediterranean style.



MIN.
SLOPE **14°**

TECK

Teck recreates the appearance of the traditional shingle roof and combines it with all the features of a modern metal roof.



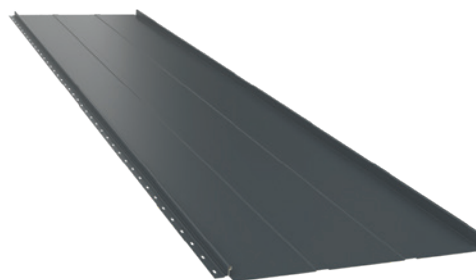
MIN.
SLOPE **16°**

Standing seam profiles

ZINC
275g/m²

CLIC

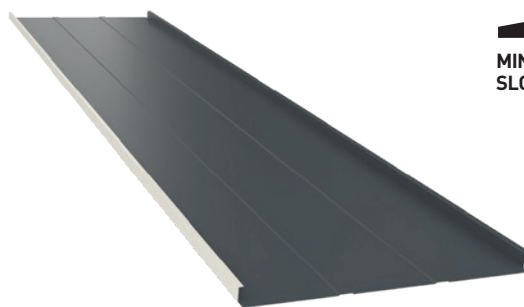
Clic standing seam profile gives a modern look, that perfectly adapts both to contemporary architectural style and heritage buildings.



MIN.
SLOPE **8°**

FALT

Falt is identical with Clic, but differentiating in installation.
The bonding of Falt metal sheets is achieved by double folding, ensuring a very good tightness to the roofing system.



MIN.
SLOPE **4°**





Rainwater

Metigla produces **complete rainwater systems** in two sizes, 125/88 mm and 165/100 mm.

The Metigla drainage system is a perfect solution for any type of roofing, combining features such as tightness and durability.

Benefits

Adaptability

The system adapts to any type of roof: metal roof tiles, ceramic tiles, bitumen shingles, profiled metal sheets and others.

Durability

Metigla uses high quality raw materials, which ensure the system's durability and efficiency over time.

Easy installation

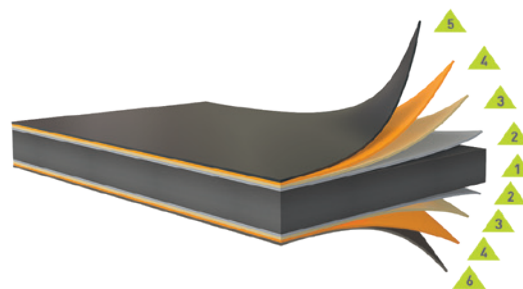
All items are specially designed and manufactured to facilitate assembly.

ZINC
275 g/m²



Steel type and structure

The raw material used by Metigla in the production process is hot galvanized steel (1), with a **zinc protection of at least 275 g/m² (2)**. The zinc coating is protected through **multilayer technology** with passivated coating (3), primary protective coating (4) and paint layer (5). The top protective layer (5) is available in following versions: **Polyester** (25 µm gloss or 35 µm mat), **PVDF** (polyvinylidene fluoride) of 25 µm, **PUR** (polyurethane) of 55 µm or **PUR MAT** (mat polyurethane) of 50 µm. On the bottom side, the paint coating is 10 µm Polyester or Acrylic (6).



For the **rainwater system**, both sides of the metallic sheet are protected with passivated coating and covered with **35 µm polyurethane paint**, whose texture offers high resistance to wear, scratches and high temperatures.

Color availability



RAL 1014 L



RAL 1023 L

RAL 3000 L
RAL 3000 PUR

RAL 3005 M



RAL 3009 M



RAL 3011 L



RAL 5010 L



RAL 6009 L

RAL 6011 L
RAL 6011 PVDF

RAL 6020 M

RAL 7016 L
RAL 7016 PUR
RAL 7016 PVDF

RAL 7024 M



RAL 8004 PUR



RAL 8004 M

RAL 8017 L
RAL 8017 PURRAL 8017 M
RAL 8017 PUR MAT

RAL 8019 PVDF

RAL 8019 M
RAL 8019 PUR MATRAL 9002 L
RAL 9002 PVDF

RAL 9005 PVDF

RAL 9005 M
RAL 9005 PUR MATRAL 9006 L
RAL 9006 PVDF

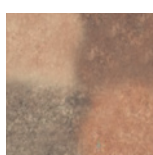
RAL 9007 L



RAL 9010 L




RAL 9016 L



SPANISH ROOF

Printed Colors may differ from the original.
For details regarding color availability for each product, please contact our commercial department.



smart covering.
simply passion.

METIGLA
smart covering. simply passion.

Metigla SRL

Ceptura, Prahova,
107126, România
T +40 244 44 58 00
F +40 244 44 58 01

metigla.ro

Metigla BVBA

Rue Le Marais, 6A
4530 Villers-le-Bouillet, Belgium
T +32 42 27 17 27
F +32 43 80 17 66

metigla.be

A project by



inoveo.ro