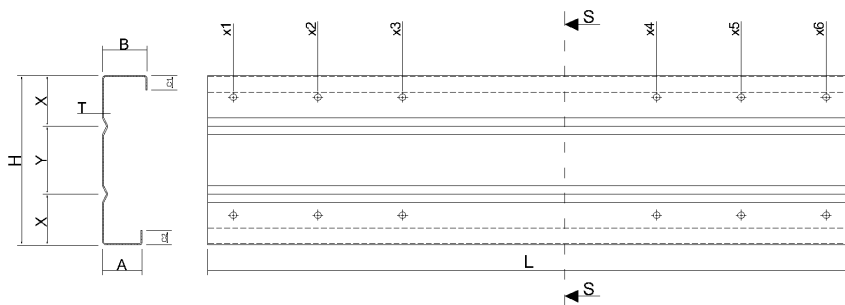
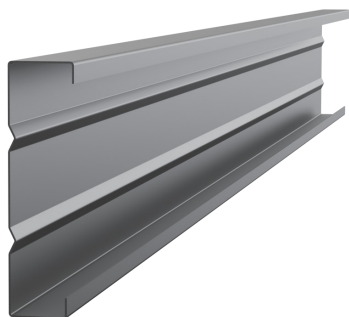









Profilele zincate CR sunt utilizate la structuri principale sau secundare, grinzi și planșee intermediare ale construcțiilor industriale sau rezidențiale, comerciale, agricole, hale sau depozite. Toate profilele zincate sunt produse pe bază de comandă, cu posibilitatea realizării unui număr variat de perforări.



#### Caracteristici tehnice Profile CR

Material	Oțel galvanizat
Grosimi disponibile (mm)	1.5 - 3
Greutate pe suprafață (kg/m <sup>2</sup> )	12 - 24
Clasă oțel	S 350 GD
Acoperire minimă de zinc (g Zn/m <sup>2</sup> )	275
Lungime minimă* (mm)	2000
Lungime maximă recomandată (mm)	13500

\*Pentru profilele cu lungimea mai mică de 2000 mm se va avea în vedere cumulara lor cu același tip de profil, astfel încât lungimea totală să fie mai mare, urmând ca acestea să fie pretăiate.

-  Capacitate portantă mare
-  Greutate redusă
-  Durată mare de viață
-  Montaj ușor
-  Produs sustenabil

## Dimensiuni și caracteristici secționale

Denumire produs	Grosime "T" (mm)	H (mm)	A (mm)	B (mm)	C <sub>1</sub> (mm)	C <sub>2</sub> (mm)	Greutate (kg/ml)
CR 200x47x53/1.5	1.5	200	47	53	17	17	3.85
CR 200x47x53/2	2	200	47	53	17	17	5.09
CR 200x47x55/2.5	2.5	200	47	55	17	17	6.36
CR 200x47x55/3	3	200	47	55	17	17	7.57

## Caracteristici geometrice minimale ale secțiunii brute

Denumire produs	A (mm <sup>2</sup> )	Z <sub>g,1</sub> (mm)	Z <sub>g,2</sub> (mm)	I <sub>y</sub> (mm <sup>4</sup> )	I <sub>z</sub> (mm <sup>4</sup> )	W <sub>y</sub> (mm <sup>3</sup> )	W <sub>z</sub> (mm <sup>3</sup> )	I <sub>y</sub> (mm <sup>4</sup> )	i <sub>y</sub> (mm)	i <sub>z</sub> (mm)
CR 200x47x53/1.5	478.8	101.78	98.18	2673725	147813	26269	3669	340	74.73	17.57
CR 200x47x53/2	637.1	101.79	98.17	3533266	190986	34710	4753	816	74.47	17.31
CR 200x47x55/2.5	798.4	102.41	97.55	4414549	245241	43106	5866	1611	74.36	17.53
CR 200x47x55/3	953.4	102.43	97.53	5229128	284959	51053	6822	2784	74.06	17.29

## Caracteristici geometrice minimale ale secțiunii transversale eficace

Denumire produs	A <sub>eff</sub> (mm <sup>2</sup> )	Z <sub>g,1,eff</sub> (mm)	Z <sub>g,2,eff</sub> (mm)	I <sub>y,eff,min</sub> (mm <sup>4</sup> )	I <sub>z,eff,min</sub> (mm <sup>4</sup> )	W <sub>y,eff,min</sub> (mm <sup>3</sup> )	W <sub>z,eff,min</sub> (mm <sup>3</sup> )	i <sub>y,min</sub> (mm)	i <sub>z,min</sub> (mm)
CR 200x47x53/1.5	315.7	101.11	98.85	2564133	140471.029	25181	3458	74.24	17.24
CR 200x47x53/2	457.1	101.72	98.24	3499970	191050.7307	34527	4753	74.41	17.32
CR 200x47x55/2.5	615.4	102.31	97.65	4424646	245189.7343	43203	5865	74.44	17.52
CR 200x47x55/3	773.7	102.34	97.62	5240338	284783.0244	51161	6818	74.14	17.28

## Dimensiuni și caracteristici secționale

Denumire produs	Grosime "T" (mm)	H (mm)	A (mm)	B (mm)	C <sub>1</sub> (mm)	C <sub>2</sub> (mm)	Greutate (kg/ml)
CR 250x57x66/1.5	1.5	250	57	66	20	20	4.77
CR250x57x66/2	2	250	57	66	20	20	6.33
CR 250x57x66/2.5	2.5	250	57	66	20	20	7.86
CR 250x57x66/3	3	250	57	66	20	20	9.38

## Caracteristici geometrice minimale ale secțiunii brute

Denumire produs	A (mm <sup>2</sup> )	Z <sub>g,1</sub> (mm)	Z <sub>g,2</sub> (mm)	I <sub>y</sub> (mm <sup>4</sup> )	I <sub>z</sub> (mm <sup>4</sup> )	W <sub>y</sub> (mm <sup>3</sup> )	W <sub>z</sub> (mm <sup>3</sup> )	I <sub>y</sub> (mm <sup>4</sup> )	i <sub>y</sub> (mm)	i <sub>z</sub> (mm)
CR 250x57x66/1.5	593.5	127.73	122.23	5226539	279576	40919	5511	422	93.84	21.70
CR250x57x66/2	791.9	127.74	122.22	6924660	364810	54209	7197	1014	93.51	21.46
CR 250x57x66/2.5	987.8	127.75	122.21	8567069	444982	67060	8787	1993	93.13	21.22
CR 250x57x66/3	1181.3	127.74	122.22	10178731	520250	79684	10283	3450	92.83	20.99

## Caracteristici geometrice minimale ale secțiunii transversale eficace

Denumire produs	A <sub>eff</sub> (mm <sup>2</sup> )	Z <sub>g,1,eff</sub> (mm)	Z <sub>g,2,eff</sub> (mm)	I <sub>y,eff,min</sub> (mm <sup>4</sup> )	I <sub>z,eff,min</sub> (mm <sup>4</sup> )	W <sub>y,eff,min</sub> (mm <sup>3</sup> )	W <sub>z,eff,min</sub> (mm <sup>3</sup> )	i <sub>y,min</sub> (mm)	i <sub>z,min</sub> (mm)
CR 250x57x66/1.5	326.3	125.40	124.56	4601027	247948.8179	34712	4792	92.82	20.72
CR250x57x66/2	495.2	127.54	122.42	6570633	348183.7536	50617	6820	93.36	21.08
CR 250x57x66/2.5	659.0	127.77	122.19	8448060	442283.7338	65986	8724	92.95	21.18
CR 250x57x66/3	823.3	127.87	122.09	10194629	521288.277	79821	10303	92.92	21.01

## Dimensiuni și caracteristici secționale

Denumire produs	Grosime "T" (mm)	H (mm)	A (mm)	B (mm)	C <sub>1</sub> (mm)	C <sub>2</sub> (mm)	Greutate (kg/ml)
CR 300x62x70/1.5	1.5	300	62	70	25	25	5.58
CR300x62x70/2	2	300	62	70	25	25	7.41
CR 300x62x70/2.5	2.5	300	62	70	25	25	9.22
CR 300x62x70/3	3	300	62	70	25	25	11.01

## Caracteristici geometrice minimale ale secțiunii brute

Denumire produs	A (mm <sup>2</sup> )	Z <sub>g,1</sub> (mm)	Z <sub>g,2</sub> (mm)	I <sub>y</sub> (mm <sup>4</sup> )	I <sub>z</sub> (mm <sup>4</sup> )	W <sub>y</sub> (mm <sup>3</sup> )	W <sub>z</sub> (mm <sup>3</sup> )	I <sub>y</sub> (mm <sup>4</sup> )	i <sub>y</sub> (mm)	i <sub>z</sub> (mm)
CR 300x62x70/1.5	694.2	152.49	147.47	8633053	383961	56613	7115	493	111.51	23.52
CR300x62x70/2	927.1	152.50	147.46	11465662	502465	75185	9319	1187	111.21	23.28
CR 300x62x70/2.5	1157.6	152.51	147.45	14236143	614563	93346	11408	2335	110.90	23.04
CR 300x62x70/3	1385.5	152.52	147.44	16943244	720403	111090	13385	4046	110.58	22.80

## Caracteristici geometrice minimale ale secțiunii transversale eficace

Denumire produs	A <sub>eff</sub> (mm <sup>2</sup> )	Z <sub>g,1,eff</sub> (mm)	Z <sub>g,2,eff</sub> (mm)	I <sub>y,eff,min</sub> (mm <sup>4</sup> )	I <sub>z,eff,min</sub> (mm <sup>4</sup> )	W <sub>y,eff,min</sub> (mm <sup>3</sup> )	W <sub>z,eff,min</sub> (mm <sup>3</sup> )	i <sub>y,min</sub> (mm)	i <sub>z,min</sub> (mm)
CR 300x62x70/1.5	343.3	149.18	150.78	7260039	318311.3683	44185	5712	110.21	21.88
CR300x62x70/2	558.8	151.85	148.11	10773303	477340.3812	69064	8783	111.56	22.82
CR 300x62x70/2.5	756.2	152.58	147.38	13787042	607317.3281	89251	11255	111.30	22.94
CR 300x62x70/3	941.4	152.68	147.28	16770849	720680.4882	108897	13392	110.82	22.81

## Dimensiuni și caracteristici secționale

Denumire produs	Grosime "T" (mm)	H (mm)	A (mm)	B (mm)	C <sub>1</sub> (mm)	C <sub>2</sub> (mm)	Greutate (kg/ml)
CR 400x67x76/2	2	400	67	76	25	25	9.15
CR 400x67x76/2.5	2.5	400	67	76	25	25	11.39
CR 400x67x76/3	3	400	67	76	25	25	13.61

## Caracteristici geometrice minimale ale secțiunii brute

Denumire produs	A (mm <sup>2</sup> )	Z <sub>g,1</sub> (mm)	Z <sub>g,2</sub> (mm)	I <sub>y</sub> (mm <sup>4</sup> )	I <sub>z</sub> (mm <sup>4</sup> )	W <sub>y</sub> (mm <sup>3</sup> )	W <sub>z</sub> (mm <sup>3</sup> )	I <sub>y</sub> (mm <sup>4</sup> )	i <sub>y</sub> (mm)	i <sub>z</sub> (mm)
CR 400x67x76/2	1144.7	203.05	196.91	24034547	654225	118370	10712	1466	144.90	23.91
CR 400x67x76/2.5	1430.6	203.06	196.90	29896171	801980	147231	13145	2886	144.56	23.68
CR 400x67x76/3	1714.1	203.06	196.90	35625930	942381	175441	15462	5006	144.17	23.45

## Caracteristici geometrice minimale ale secțiunii transversale eficace

Denumire produs	A <sub>eff</sub> (mm <sup>2</sup> )	Z <sub>g,1,eff</sub> (mm)	Z <sub>g,2,eff</sub> (mm)	I <sub>y,eff,min</sub> (mm <sup>4</sup> )	I <sub>z,eff,min</sub> (mm <sup>4</sup> )	W <sub>y,eff,min</sub> (mm <sup>3</sup> )	W <sub>z,eff,min</sub> (mm <sup>3</sup> )	i <sub>y,min</sub> (mm)	i <sub>z,min</sub> (mm)
CR 400x67x76/2	558.1	201.53	198.43	20983688	583145.0808	97161	9401	145.26	22.82
CR 400x67x76/2.5	783.7	203.35	196.61	27674271	760470.3116	130237	12384	145.83	23.17
CR 400x67x76/3	1014.9	203.41	196.55	33684637	924456.7206	160377	15135	145.56	23.27